

## Bitmap in drawing is distorted in preview and not printed

Published Date: 06-08-2010

Applies to: Inventor 2011

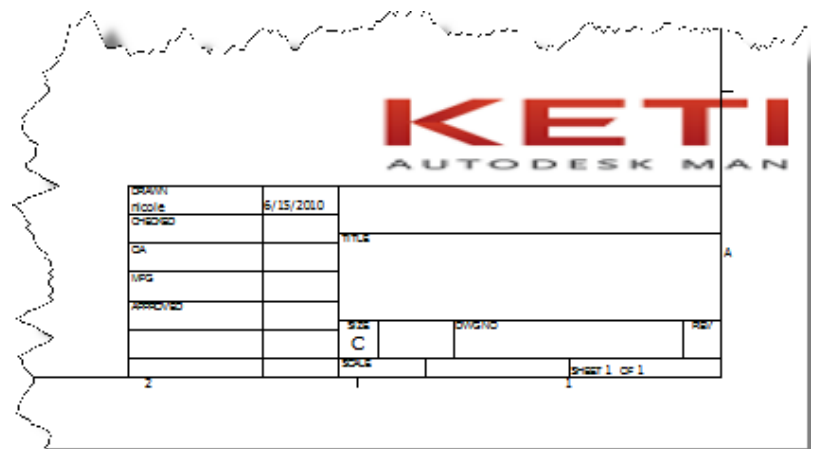
### Challenge

This Hotfix addresses an issue where bitmaps in drawings are distorted in a preview and are not printed

### Solution

Autodesk Hotfix - [DL15192521.zip](#)

For more information click [here](#).



For more technical solutions visit [www.ketiv.com/support](http://www.ketiv.com/support) or call 866.465.3848.