

Autodesk Vault 2015

What's new Vault 2015

Improved add-ins

Vault 2015 introduces an important change based on user feedback to file status issues, addressing dirty file workflows and extending Inventor browser filtering to enable users to make better decisions around file resolution and updates.

Autodesk® Vault 2015 software addresses a number of highly requested user improvements to file status management in CAD integrations, Item assignment, BOM configuration and web client access, as well as some outstanding replication improvements and new help - documentation.

▶ Edited out of turn improvements

Part of a longer-term effort to improve user interaction and understanding of file status within the CAD application, the new Autodesk® Inventor® Vault browser provides users with clearer file status information and better options for working with dirty files.

The yellow information status icon has been limited to "unexpected version" events, and the new plus sign to the right of a file indicates that the document has been edited locally while enabling the user to see the last Vault status, helping them understand whether the file needs to be checked out, cannot be checked out or if they have the correct version on disk.

Vault now makes only the valid commands available to the user, including the ability to force download of file or revert to latest, reducing end-user confusion.

▶ Improved Inventor browser filtering

The Vault browser filtering controls have also been enhanced to enable users to display files based on vault status (checked out to me, checked out to others, not checked out or not added) or local file status (no edits, saved edits, or unsaved edits).

This improves user understanding of file status and helps users to make better decisions on dirtied files.

▶ Open or place file from item

Autodesk® AutoCAD® and Inventor open dialogs now support search and open file from item, defaulting to open the primary item attachment.

▶ Create virtual component/part reference from item

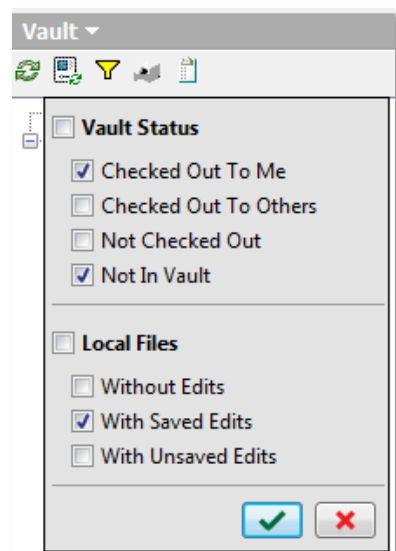
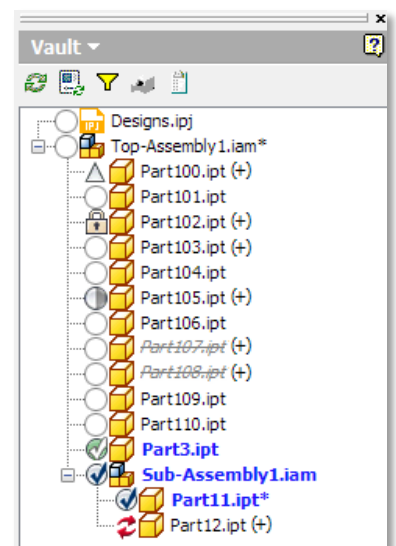
Historically, the use of virtual parts historically has been limiting within Inventor as users were not able to assign item and share component properties across models (each virtual component being created and edited in isolation).

Vault 2015 permits users to create a virtual component and select a source item for extended file property information.

Users can also search for and attach items as part references inside of AutoCAD® Mechanical software.

For more information about Autodesk Vault, visit www.autodesk.com/vault.

To locate the reseller nearest you, visit www.autodesk.com/reseller.



Improved add-ins

New support for Revit model properties, group loading, and retrieval make the new Revit integration more user-friendly and productive.

> Revit integration enhancements

The Autodesk® Revit® software integration has experienced a number of important functional enhancements to enable broader adoption of Revit in the Vault environment and improve existing user productivity.

Import from Vault

The new Import from Vault feature lets you import CAD files including DWG™, DXF™, DGN, SKP, and SAT stored in the Vault into the current Revit project. Unlike Link from Vault, when the project is saved to Vault, only the project is updated.

Load Group from Vault

Vault now supports loading Model groups, Detail groups, and Attached Detail groups from the vault into the current project, so users can choose whether they want to load all groups (i.e., only the groups needed in a single workflow).

Load Family

Users can now load all of the family types in a selected family in one click, making it faster to retrieve all of the family types needed for a project. And this command now defaults to the last used folder making it easier to locate the family types you use most often.

Managing the Revit model

Capture and manage the Revit model project properties a new ability to import and map these to Vault user-defined properties. Also manage category, state, and revision of the model with Autodesk® Vault Professional document management tools.

General enhancements

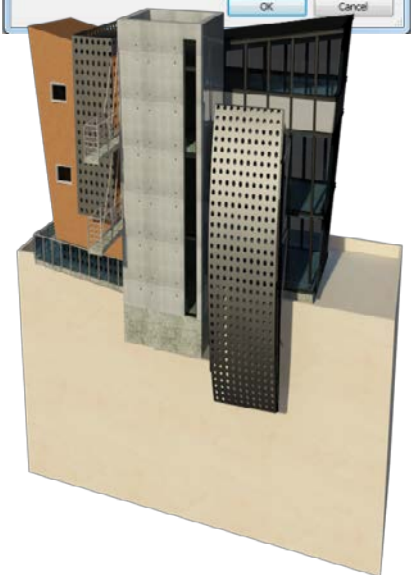
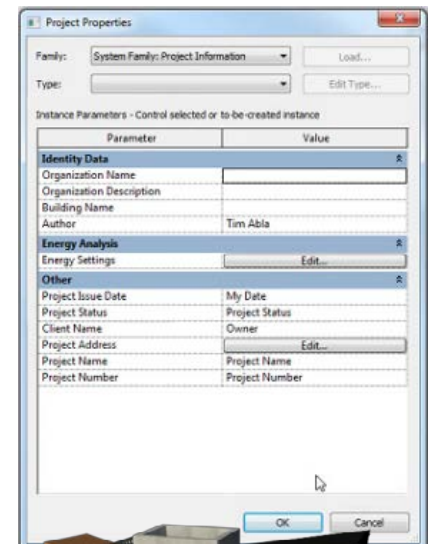
Shared parameters support enables users to point to a shared parameters file stored in the vault for consistency and parameter reuse.

A new Mapping User Interface on the Vault Options dialog box has been added to streamline common Revit workflows and the Revit Ribbon strip has been updated to simplify Login In and Connection Status commands.

Support for the Link File command has been extended to include .dgn, .sat, and .skp files.

The Link to DWF or DWFx command is now maintained, meaning, when users check out a file with a DWF link, the DWF file is automatically checked out as well. When the file is closed, the DWF link is automatically checked back into the vault.

Finally the “Load and Place” command has been added to the load family dialog and enabled when a single family is selected.



Item & BOM updates

A very strong theme for the Vault 2015 release is enhanced item usability and BOM flexibility. In addition to the Item-enabled CAD add-ins, users now have simpler approaches to item creation, edit and BOM configuration.

➤ Assign item

Assign item to file workflow has been simplified to a single assign dialog box, enabling users to quickly confirm (or edit) item numbers, properties, and BOM structure.

At the point of assign item, users can now:

- Resolve duplicates automatically
- Change item numbering
- Assign all items, parent only, or a selection of BOM rows
- Revise BOM rows
- Edit BOM position numbers

In addition to the traditional assign item to file workflow, Autodesk Vault 2015 now permits file association with items via drag and drop and copy and paste.

This new approach permits users to create links from

- File / Item
- Item / Item
- Component / Item

Non-primary file links are displayed in the new item dialog box as “hidden links” in the info bar on the detail page and can be viewed via right-click option or View tab.

Item numbering

When an item is created, the default numbering scheme is used to generate the item number. If the scheme requires user input, users are immediately prompted to fill in the required values so there is no need to go back and edit the item record later.

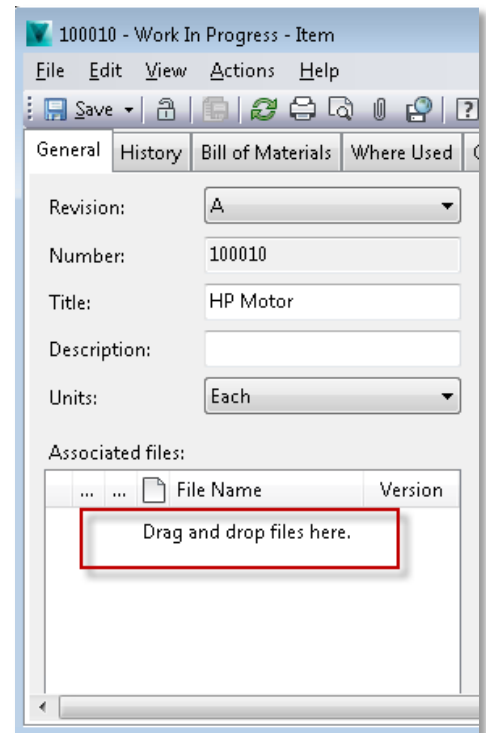
A Replace button is provided to help you search the vault for properties that you want to map to fields requiring user input. A pre-check button is provided to verify the mapped values.

In addition, you can quickly access the Change Number dialog by box right-clicking on an item.

➤ Item dialog

In order to support the drag-drop-copy-paste workflows, the new Item dialog box is now modeless, meaning users are able to have numerous item windows open simultaneously and move back and forth between the Vault Explorer window and the Item dialog box.

You will also notice the new item edit mode. In previous releases, users by default opened items as read-only and were required to close and select “Edit Item” to affect any changes. Users are now able to open the item and select “Edit” to make item changes and “Save” at any time to commit changes and put the item back into a read-only state.



Item & BOM updates

Flexible BOM configuration, including adding and removing rows, reordering rows, and nested edits, make editing your production BOMs easier than ever.

► Item Save As

New to Vault 2015, users now have a "Save As" option under the Item file menu, making it possible to quickly and easily create a new item from an existing one.

Save As creates the new item with:

- Copied item properties
- BOM rows copied as manual rows
- Attachments included

Save As, however, does not include links and the new item is created in the background without New Item dialog box.

► BOM configuration

As we mentioned under item assignment, users now have a number of new options for configuring and working with the Item BOM.

Exclude Rows

Instead of having to remove items from the completed BOMs, users are now able to turn BOM rows on and off, meaning the item remains visible as part of the BOM but can be excluded from production activities, perfect for long lead time BOM items.

Add Rows

Users are able to create new BOM rows from existing items or new items created directly in the BOM tab.

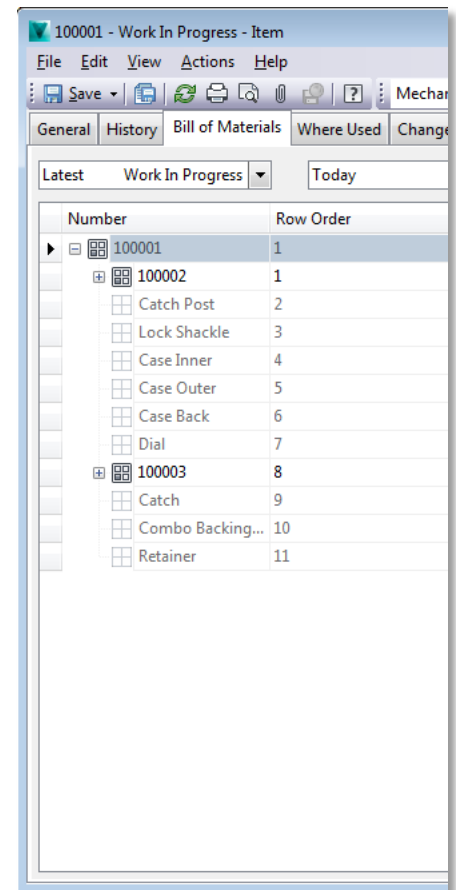
Nested Item Edit

Unlike previous versions, users are now able to edit item details and structure in nested dependencies, not just the top level BOM.

Reorder Rows

BOM editors are able to drag and drop items to change the BOM order, they or can enter an order value as either a number or a string. Any row order duplicates on the same level are highlighted.

The new Save BOM View command (replacing Export BOM) is the final step in sharing the modified BOM content outside of Vault Professional.



New thin client

The Autodesk thin client has had a complete overhaul, boasting a whole new look and feel with a modern, simple and easy to navigate interface and tools.

Project Explorer

The new Project Explorer interface presents a configurable, visual file and folder view, enabling users to display content as either:

- File Grid View (File and folder lists)
- Tile View (Thumbnails)
- Plank View (Thumbnail and properties)

As the 2015 thin client displays folders, users are now able to simply browse the folder structure by selecting the required folder (with category and property detail) or navigating along the breadcrumb at the top of the window.

The properties displayed in the project explorer are configurable for each user or can be set by the administrator as they were in previous versions.

Viewing files

File preview and download

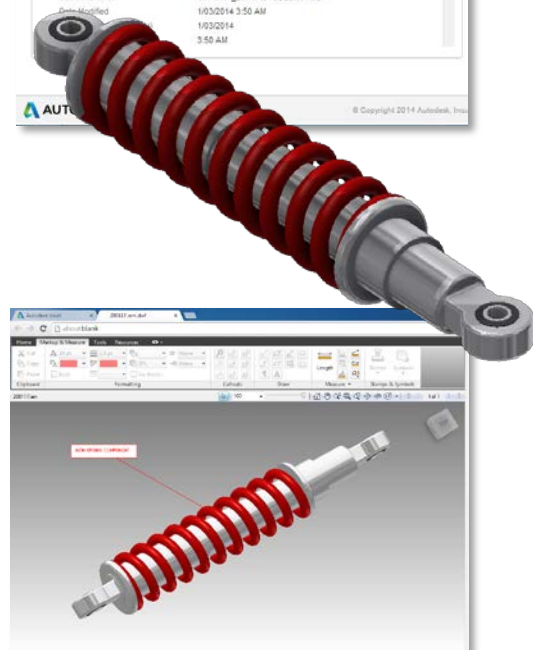
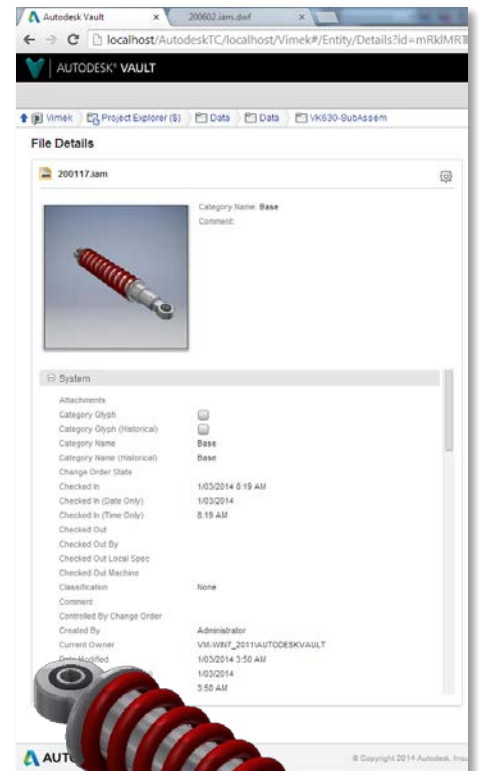
Once a file is selected, users are able to use new controls to quickly access the available commands. In the read-only web client this includes View and Download documents of view folder details.

Selecting "Preview" brings up a high-resolution thumbnail for simple preview. For documents with associated visualization files, users will be able to view the document in the browser using the ADR add-on, now supported for several browsers.

File details

Clicking on the file name or thumbnail now takes users to the new file detail page. This is a summary page that includes not only the basic document (or folder) overview and preview image, but now all available system- and user-defined properties.

To the right of the summary are a number of tabs, including the document history, uses (children), and where used (parents), making all relevant file detail available in one location.



New thin client

> Item master view

The thin client item master view has had an overhaul presenting a much more visual item master view that enable record paging

Item details

The thin client Item detail page has been set up with the same look and feel as the file detail page, displaying a preview of the primary attached file with all system and user defined properties and a number of tabs.

The BOM tab enables users to see a read only representation of the multi-level or structured BOM, a first level only view of the BOM or, a parts only BOM view will all sub-assemblies excluded.

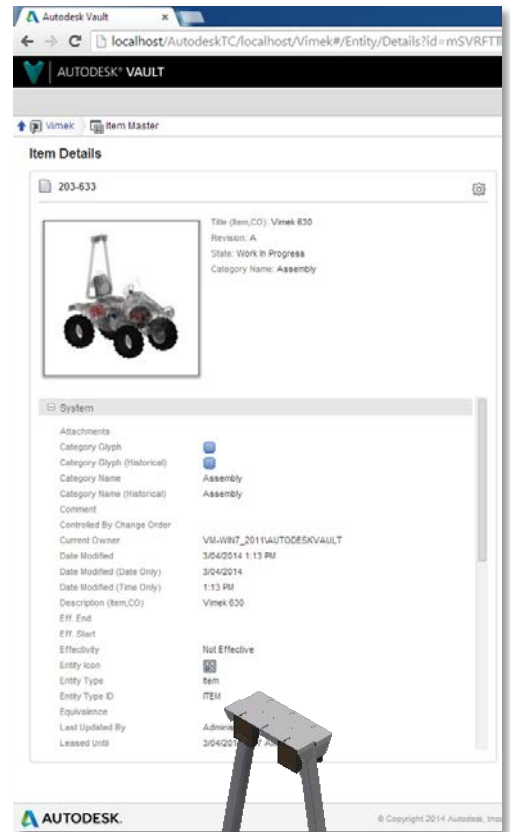
The item also has a separate item history tab, where used and attachments tab, also including all documents associated with the item.

> Search

The basic find command in thin client allows users to run a search in the current context with options to include sub folders and whether to return latest only or all versions.

Advanced find now includes a new pop up dialog with simple tools to build search criteria and configure to search all Vault, Item Master or Project Explorer.

The search results are now displayed in a separate advanced find results window in which users can carry out additional basic finds across the result set and these results remain active until the user searches again, meaning users can switch in and out of the results window to complete additional file or item tasks without having to re run.



Autodesk Vault Data Standard

Capture and enforce your files most relevant or required details directly within the CAD application or Vault Explorer. Vault Data Standard enables users to customize or configure their own data entry forms at file creation to prompt users for file detail.

> Data Standard in Vault Explorer

Create new folder

Selecting an existing location in Vault Project Explorer, users are able to right-click or choose "New Standard Folder" from the file menu.

A customizable dialog box comes up, prompting the user to select folder name, category, and any number of user-defined properties required for that project.

Create new file

Similarly, users can select "New Standard File" directly from Vault Explorer and create a new file based on your organization's pre-defined templates stored in Vault.

Once again, a customizable dialog box prompts the user for the file template, file name, or numbering scheme, as well as information such as category and any required or optional user-defined properties.

Once the data card has been completed correctly, the OK button is enabled and the file is created in the correct location using the template. Users are now able to check out the document and add content.

Edit properties

The property dialog box used to create the file above can also be used to edit file properties; select "Edit File Datasheet" to open the file datasheet for editing.

File and item views

In addition to file and folder creation, the Data Standard tool provides a simple method to add personalized tab views to items, folders and documents presenting data card values or other desirable object detail.

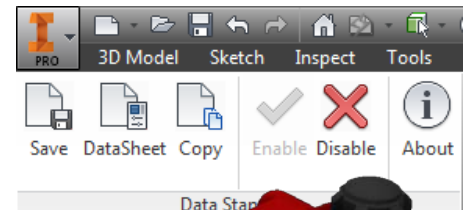
> Data Standard in CAD

Data Standard has been implemented with Autodesk AutoCAD, AutoCAD Mechanical and Autodesk Inventor products enabling users to enter document detail and control vault location on save.

Save File and Check In

When saving files in supported applications, the user is prompted by another dialog box for things like category, naming scheme, user-defined properties, and save location settings, making it possible through the application of some simple rules to control where new files are stored and added to Vault.

Optionally, the Check In command can be automatically triggered, ensuring users add locally saved files to Vault on creation.



Folder	*	
Title	*	External Tank
Description		External Tank Assembl
State		
Path		C:\Vault\Vimek\Data\
File Name		PKR-000005.ipt
Comments		

Replication, install, sync and help

A number of improvements around the install and help experience have been made, as well as major enhancements to Project Sync including multi folder mapping and replication with the introduction of the Autodesk Vault Filestore Server.

> Autodesk Vault Filestore Server

In a bid to improve replication performance, Autodesk introduces Autodesk Vault Filestore Server (AVFS) a new console type that permits a local site file store while enabling users to redirect SQL calls to the remote ADMS.

Removing the requirement for user web calls to route through local ADMS to remote ADMS, significantly increases remote client performance making this single SQL model a more attractive option for connecting workgroups that may have previously used full replication or a slower file store replication option.

> Installer changes

Project Sync

Project Sync 2015 will now be available under the Tools and Utilities section of the 2015 Vault Professional Client media. Prior versions of this tool will still be available on the Buzzsaw site.

Job Processor

Users are now able to install Job Processor on their machine at the time of install or to remove it separately via add/remove programs after install. Installing a job processor on every client is unnecessary and can result in multiple licenses being consumed from the same client as well as impacting the productivity of the CAD user.

'sa' password

In response to a number of customer requests, we have modified the server install behavior, enabling users to install without having to use the default SQL server system administrator (sa) account. This adds a lot of flexibility to high-security environments where there is a strong password policy in place or restrictions on use of the default SQL 'sa' account.

> Project Sync

Users can now specify multiple mappings between Vault folders and Buzzsaw sites/folders within one vault- this means users are able to select the exact Vault folders they wish to synchronize (ending the need to synchronize unwanted files), and users will be able to map those Vault folders to one or more Buzzsaw sites.

> New online help

Autodesk Vault 2015 has now moved away from the wiki page model for help offering users a more modern context-sensitive online HTML experience.

